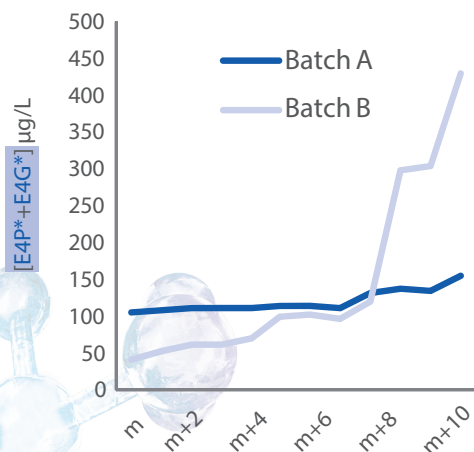


Brett analysis tailored to your wine

1 VOLATILE PHENOL ANALYSIS BY SBSE/GC/MS*

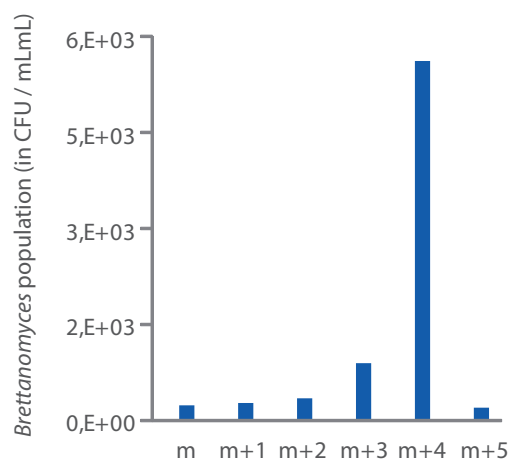
Test within one hour: 10 mL of wine needed.



Investigation of these compounds allows for preventative decision making before quantities exceed perception threshold.

2 QUANTIFICATION OF BRETTANOMYCES POPULATION BY CELL COUNT METHOD

Maintain control with regular follow-up investigation of *Brettanomyces* populations.



Inexpensive monthly follow-up of wines during maturation.

3 BRETTANOMYCES QUANTITATIVE PCR

Detection and quantification of *Brettanomyces*, time required = less than a day.

Analysis of wine used for topping-up

PCRQ BRETT (UFC/mL)	2,5.10²
V4P + V4G (µg/L)	202
E4P + E4G (µg/L)*	153

qPCR method is a fast and highly specific test for the detection and quantification of *Brettanomyces* during wine maturation.

*compounds analysed under COFRAC accreditation