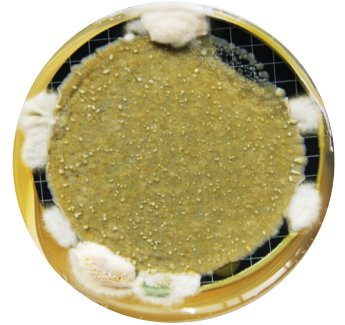


YEAST/MOLDS MEDIUM

Selective and specific medium used for the identification and quantification of all yeasts in juice and wine.

Medium in compliance with resolution OIV-OENO 206/2010.



Composition

Amino acids, yeast extract, glucose, agar, distilled water + Selective compounds*.

Presentation

Of beige colour, this medium is packaged in ready to use agar Petri dish 55 and 90 mm.

pH (25°C): 5.5.

10 Petri dishes per pack.

Storage and expiration

6 months at +2°C / +8°C from manufacturing date (YY/MM/DD).

Incubation protocol

2 days at 25°C.

Colonies aspect

- Medium-sized cream coloured colonies with a creamy appearance and semi-rounded shape.
- Filamentous colonies with different colours according to the mold species.
- To see the colonies better, we recommend using black coloured membranes.

Organisms used to test sterility and fertility

Positive Control: strains of yeast identified by genetic analysis.

Negative control: Interlaboratory analysis.

* Inhibited microorganisms: acetic and lactic bacteria, moulds.

* N° CAS inhibitor: 56-75-7, 92-52-48; < 0.025 % in weight.

Article code / Medium colour code

MIL-LM 