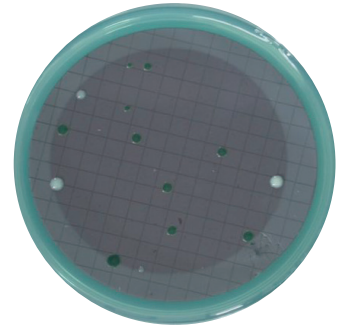


# TOTAL FLORA MEDIUM

*Selective and specific medium used for the identification and quantification of the total flora in juice and wine (yeasts and bacteria).*

**Medium in compliance with resolution OIV-OENO 206/2010.**



## Composition

Casein extract, yeast extract, dextrose, agar, distilled water, dye + selective compounds\*.

## Presentation

Of blue-green colour, this medium is packaged in ready to use agar Petri dish 55 and 90 mm.

pH (25°C): 5.5.

10 Petri dishes per pack (vacuum packed).

## Storage and expiration

3 months at +2°C / +8°C from manufacturing date (YY/MM/DD).

## Incubation protocol

12 days at 25°C.

## Colonies aspect

- Different according to the microorganism (yeasts / bacteria).
- To see the colonies better, we recommend using black coloured membranes.

## Organisms used to test sterility and fertility

Interlaboratory analysis.

\* Inhibited microorganisms: Moulds.

\* N° CAS inhibitor: 92-52-48, < 0.025 % by mass.

## Article code / Medium colour code

MIL-FT