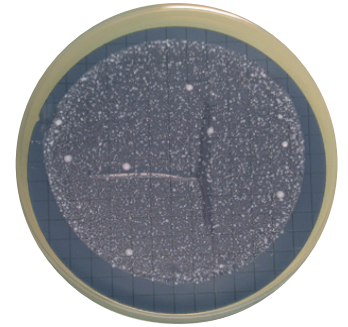


# TOTAL BACTERIA MEDIUM

*Selective and specific medium used for the identification and quantification of all bacteria in juice and wine.*

**Medium in compliance with resolution OIV-OENO 206/2010.**



## Composition

Peptone, yeast extract, meat extract, dextrose, agar, distilled water + Selective compounds\*.

## Presentation

Of beige colour, this medium is packaged in ready to use agar Petri dish 55 and 90 mm.

pH (25°C): 5.0.

10 Petri dishes per pack (vacuum packed).

## Storage and expiration

6 months at +2°C / +8°C from manufacturing date (YY/MM/DD).

## Incubation protocol

12 days at 25°C.

## Colonies aspect

- Different according to the bacterium.
- To see the colonies better, we recommend using black coloured membranes.

## Organisms used to test sterility and fertility

Positive Control: strains of bacteria identified by genetic analysis.

Negative control: Interlaboratory analysis.

\* Inhibited microorganisms: yeast and moulds.

\* N° CAS inhibitor: 92-52-48, 7681-93-8; < 0.025 % in weight.

## Article code / Medium colour code

MIL-BT/BL 